

PARTICULATE FILTRATION

LVHF Series

High Flow | Low Viscosity Housing Filter
150 psi • up to 211-951 gpm



Model no. of filter in photograph is:
LVHF340NVBRFZZA

Features

- Excellent filtration performance in a single pass
- Low pressure loss due to innovative element technology
- Easy to service thanks to intelligent element design
- Easy to adapt to filter housings for the removal of the fine particles in diesel
- The Low Viscosity-Housing Filter LVH-F is mainly used to filter low-viscosity fluids. It is especially suitable for applications with large amounts of dirt that need to be removed in just a single pass
- The Optimicron® filter elements used here ensure that both the required cleanliness and a long service life are achieved.
- Available in various sizes, the filters can be optimally integrated into new or existing systems.
- The filters are designed according to ASME Code Section VIII rules and regulations for pressure vessels as well as the ability to certify to other global standards upon request.

Applications

- Point of use fuel dispensing
- Fleet fill/bulk fuel transfer
- Bulk fuel unloading
- Protection for high-flow fuel injection systems
- Bulk tank kidney loop/recirculation

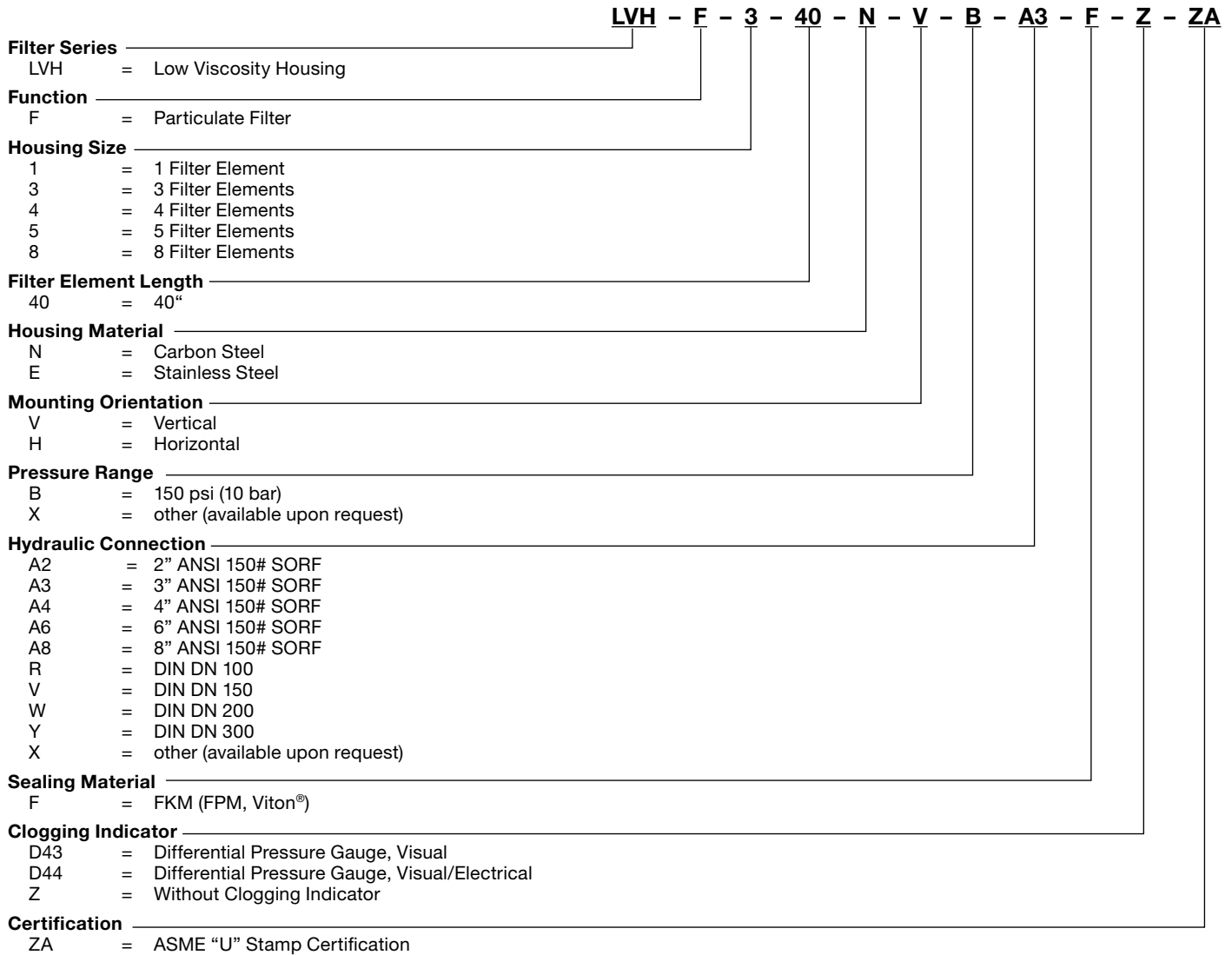
Markets

- Industrial
- Bulk Fuel Filtration
- Marine
- Mining Technology
- Agriculture
- Power Generation

Technical Specifications

Flow Rating	211-951 gpm (799-3600 L/min)
Inlet/Outlet Connection	ANSI 150#: 2"-12" DIN: DN50-DN300
Max. Operating Pressure	150 psi (10 bar)
Max. Ambient Temperature	122°F (50°C)
Max. Operating Temperature	158°F (70°C)
Material Housing	Stainless Steel or Carbon Steel

Model Code



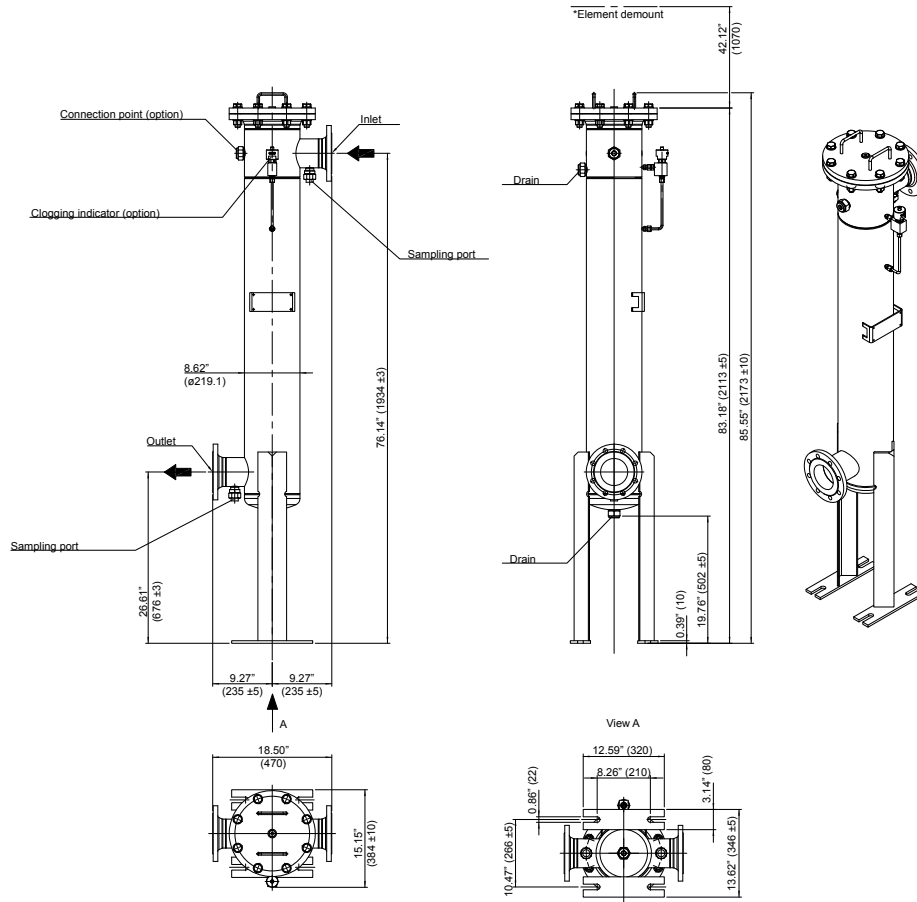
Notes: Filter elements must be ordered separately and installed before initial operation on site

Fuel Oils

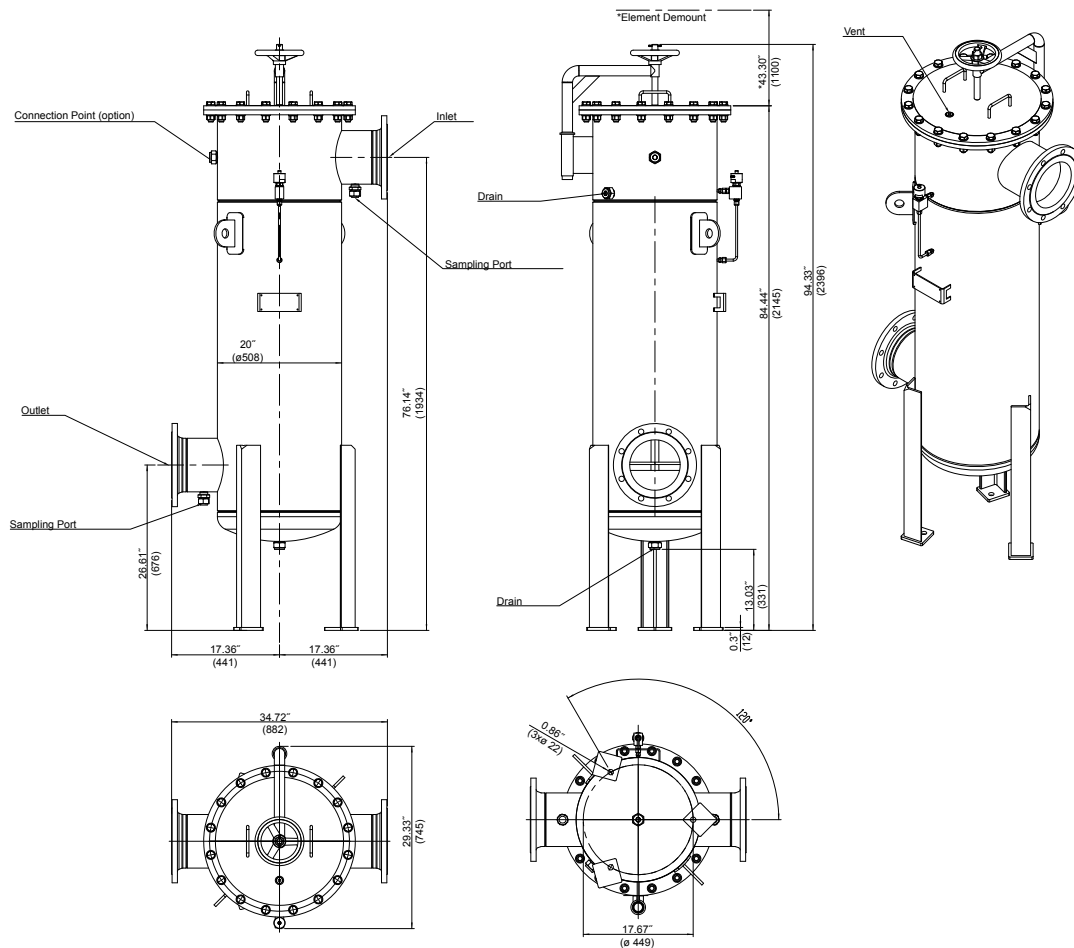
- ULSD15, low sulfur diesel and high sulfur diesel
- Biodiesel blends
- Synthetic diesel and blends
- No. 2 fuel oil and heating oil

PARTICULATE FILTRATION

Dimensions LVH-F1



LVH-F8

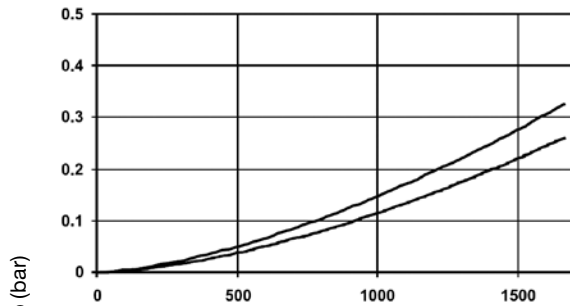


Dimensions shown are inches (millimeters) and for general information only. For complete dimensions please contact HYDAC to request a certified print.

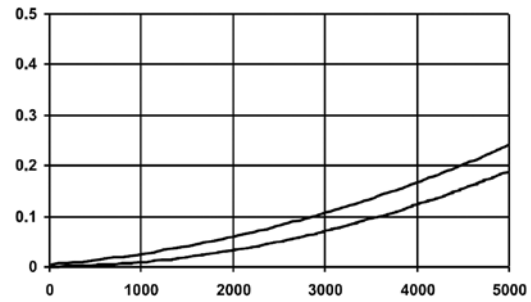
Pressure Drop LVHF

The lower curve applies to diesel at 20°C (the upper curve is for mineral oil with viscosity to 30 cSt for comparison).

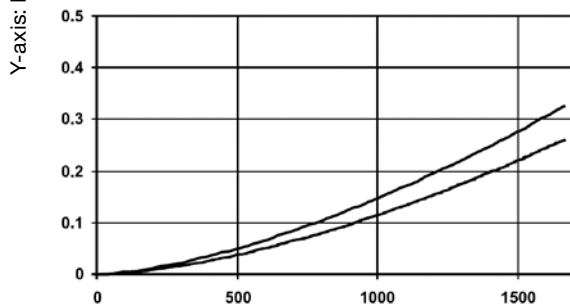
LVH-F 140



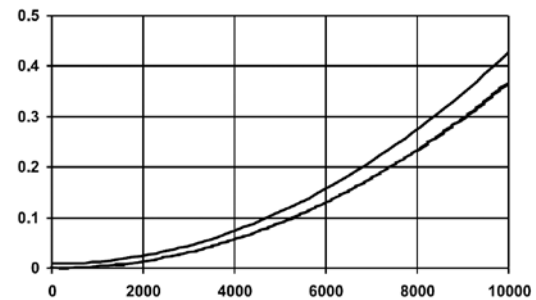
LVH-F 440



LVH-F 340



LVH-F 840



X-axis: Flow Rate (L/min)

Filter Calculation

Filter Size (Model)	Maximum Flow Rate	Number of Filter Elements
LVH-F-1 40	211 gpm	1 pc.
LVH-F-3 40	317 gpm	3 pcs.
LVH-F-4 40	476 gpm	4 pcs.
LVH-F-5 40	632 gpm	5 pcs.
LVH-F-8 40	951 gpm	8 pcs.

Filter Element Selection

Element	Designation	Part No.
Filter Element 40"	N42ON-DF003-FA40F	3965085
	N42ON-DF005-FA40F	3916691
	N42ON-DF010-FA40F	4055947

* Contact Factory for More Details