



Selector Valve RV 360

Key valve features

The selector valve RV 360 is specially designed for use on front-end loaders of agriculture tractors. The valve provides an optimized routing of hoses and increased productivity in the assembly of the loader. Only four hoses have to be connected from the directional control valve. The valve is designed with RV 361 as the basic module for one implement function. This can be extended with a section to become RV 362 giving an additional implement function.

RV 360 is pilot operated in order to achieve low internal leakage in combination with reliable switching function. The pilot operation also gives a low current consumption.

Both RV 361 and RV 362 can be configured with a cross-port relief valve.

The basic valve RV 361 is available with connections for one or several accumulators for loader suspension. The valve is then configured with a solenoid operated shut-off valve in order to switch the loader suspension system on/off.

The valve can be equipped with plug-in connections at delivery.

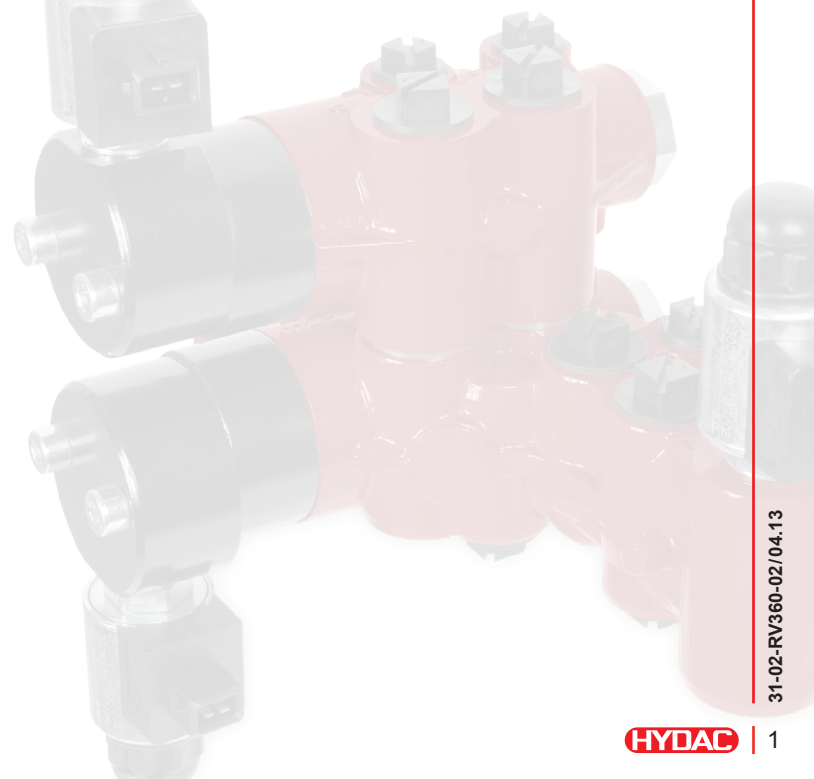
Technical data

Pressures / Flow	
Max. operating pressure per port A – H, J – P:	300 bar
Max. permissible flow port L, K:	60 l/min ¹
Fluid temperature range:	-15 °C up to +80 °C
Pressure setting for cross-port relief:	160 up to 220 bar
Pressure drop one way port L ↔ J or P, K ↔ B or C at 60 l/min:	<10 bar
Pressure drop port P – G / activated solenoid at 20 l/min:	<3 bar
Pressure drop port N to G at 20 l/min damping restriction SBV mounted:	<25 bar
Permissible contamination level:	Equal or better than 20/18/14 as per ISO 4406
Viscosity range:	10 up to 400 mm ² /s (cst)
Leakage port J, B to H, A at 100 bar 32 cst and 40 °C:	<13 cc/min
Pressure fluid:	Mineral oil and synthetic oil base on mineral oil HL, HLP according to din 51524

¹ Flows up to 120 l/min is allowed if switching to neutral always take place with lower flow then 60 l/min at operating pressure below 210 bar.

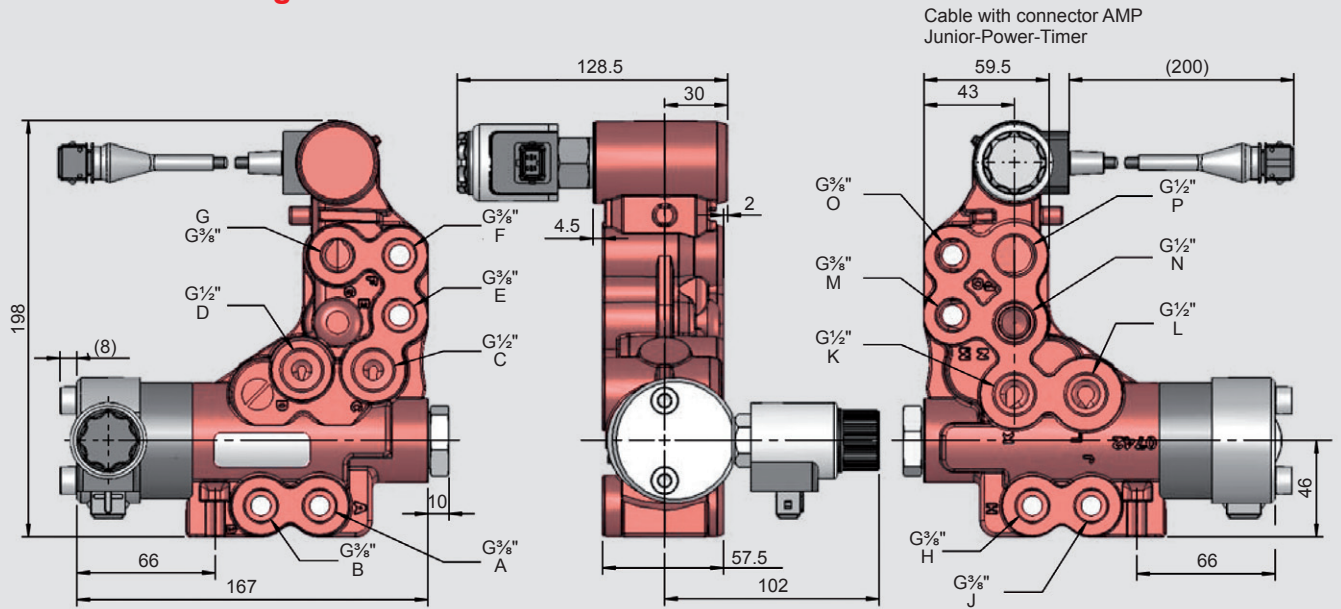
Higher values are possible, depending on application. For applications with demands that exceed stated data above, please contact us for consideration.

MTTFd value after consultation with HYDAC.

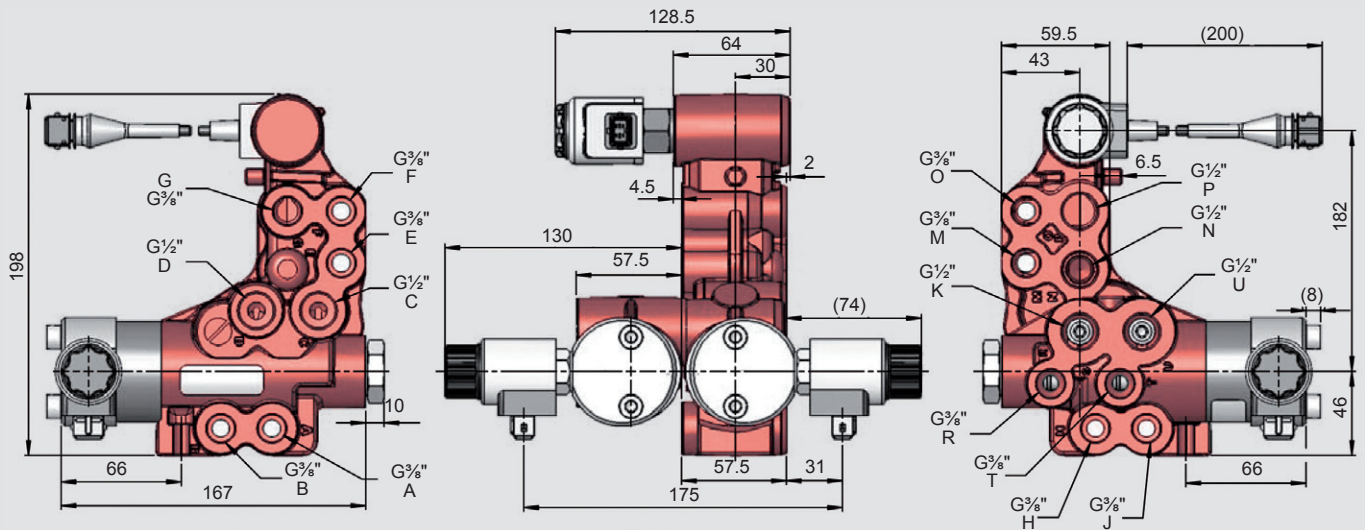


* Contact us for more information about the HYDAC advanced loader suspension solutions of the HSE product family.

Dimensions and weight



RV 361



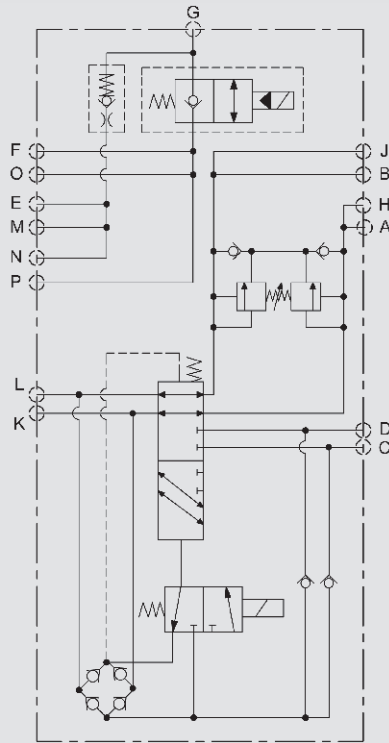
RV 362

Weights, complete valve

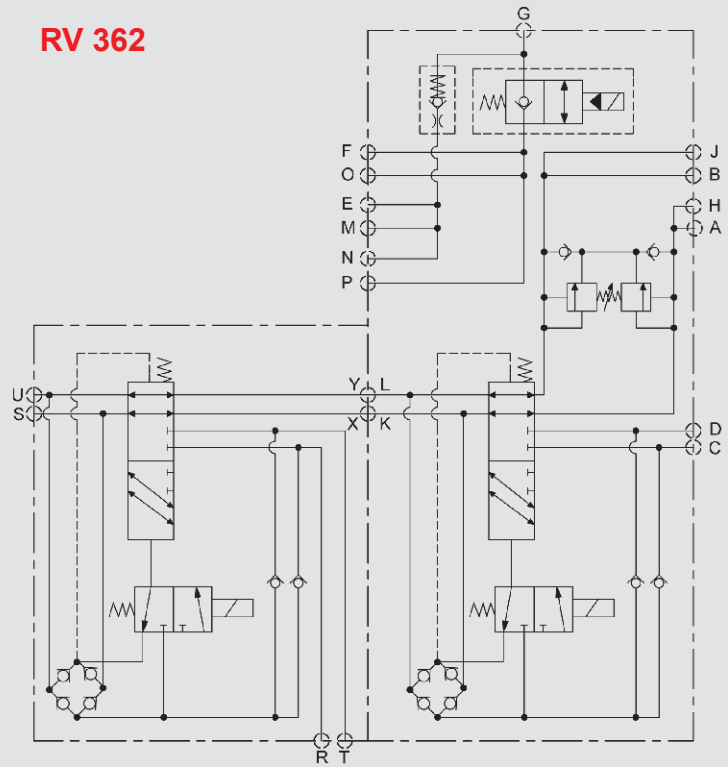
1 section	RV 361	6.5 kg
2 sections	RV 362	9.4 kg

Hydraulic schematics

RV 361

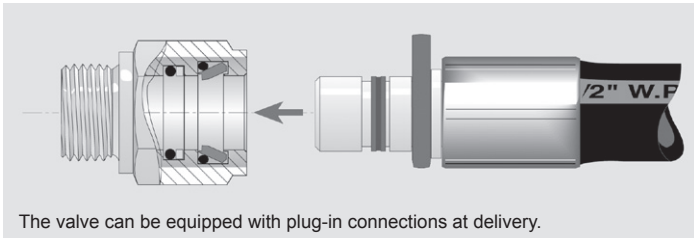


RV 362

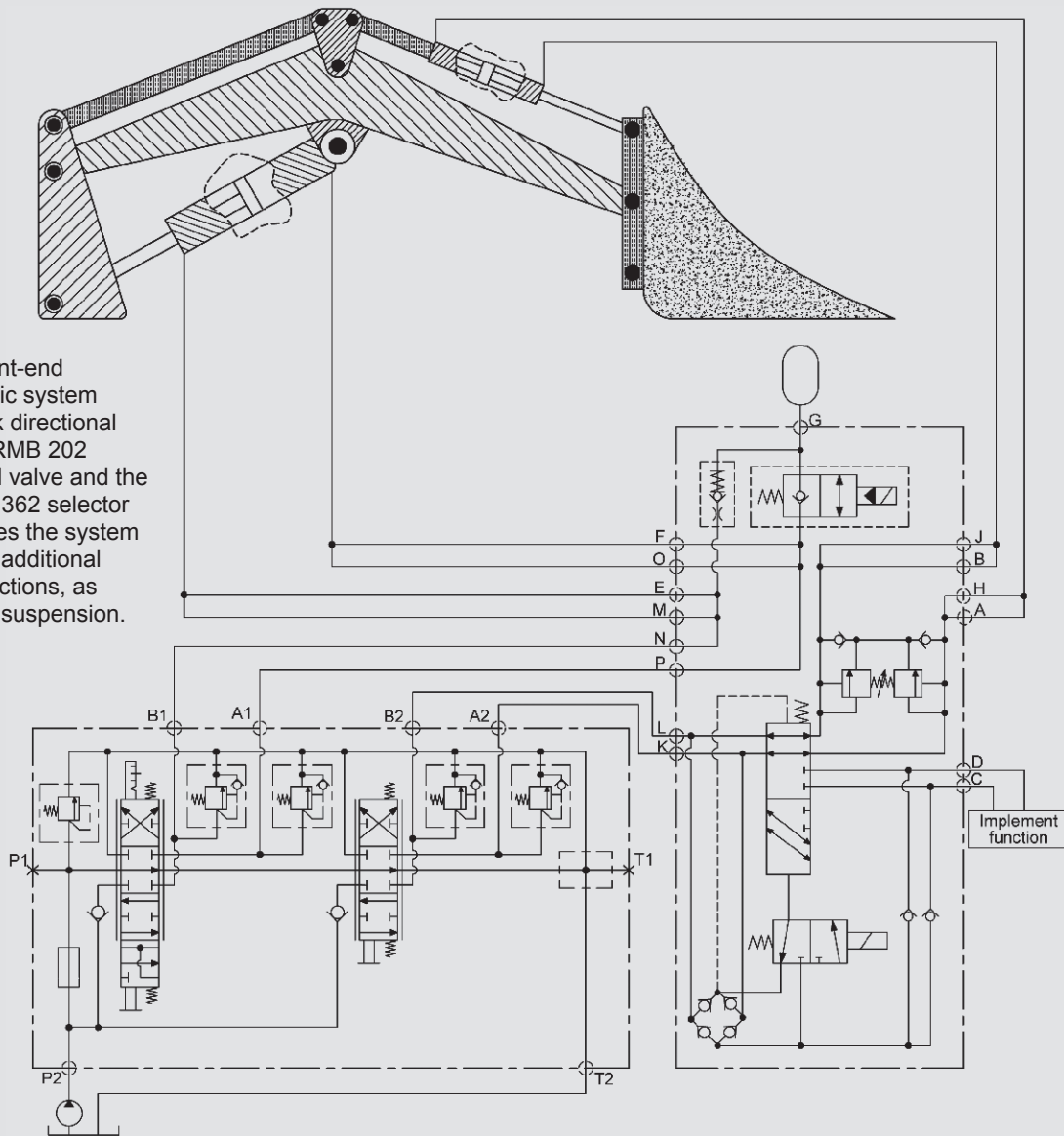


Plug in adaptor options

Type WEO Plug-In, size $\frac{3}{8}$ "	QCFG03
Type WEO Plug-In, size $\frac{1}{2}$ "	QCFG04



Typical hydraulic circuit diagrams



In a typical front-end loader hydraulic system the monoblock directional control valve RMB 202 is main control valve and the RV 361 or RV 362 selector valve completes the system for one or two additional implement functions, as well as loader suspension.

HYDAC offers you the complete concept for front-end loaders.

The concept includes the valves for the hydraulic system as well as our great experience of the front-end loader application.

Contact us for more information!

Note

The information in this brochure relates to the operating conditions and applications described.

For applications or operating conditions not described, please contact the relevant technical department.

Subject to technical modifications.



Nordhydraulic
HYDAC INTERNATIONAL

Head Office
HYDAC INTERNATIONAL
GMBH

Industriegebiet
66380 Sulzbach/Saar
Germany

Phone: +49 6897 509-01
Fax: +49 6897 509-577

E-mail: mobilevalves@hydac.com
Internet: www.hydac.com